



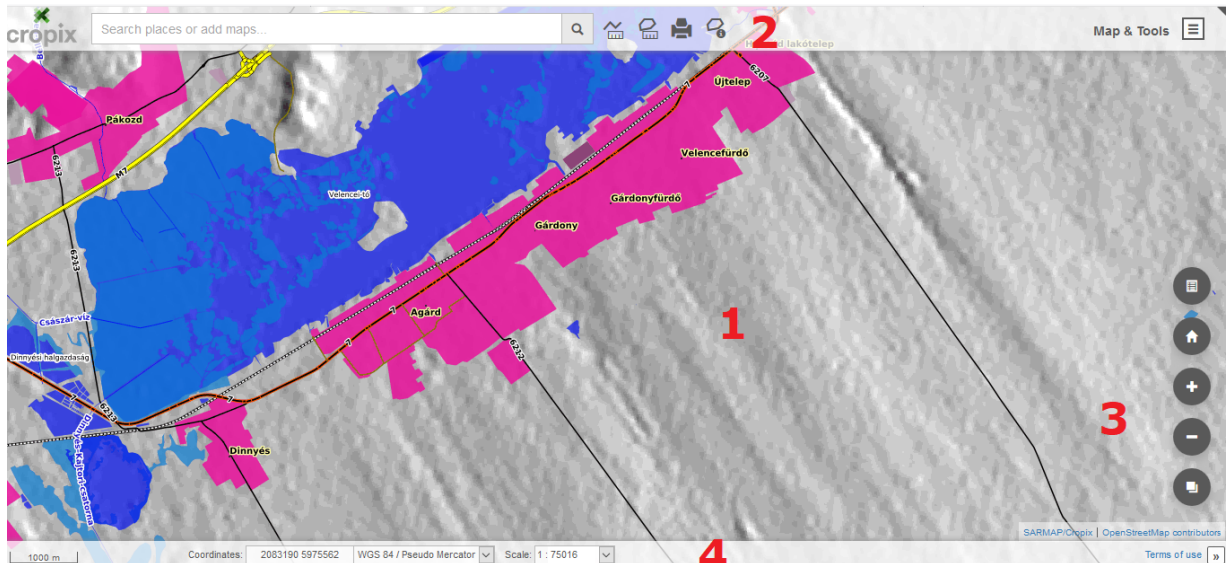
User documentation iMap

Contents

1.	General information	2
2.	Map navigation	2
2.1.	Search function.....	2
2.2.	Zoom and pan	2
2.3.	Full screen	2
3.	Background maps, themes and layers.....	3
3.1.	Change of the background map.....	3
3.2.	Themes	3
3.3.	Switch-on and -off map layers	4
3.4.	Print the legend	4
3.5.	Compare the upper map layer, with a lower layer	4
3.6.	Import external map layers	5
	WMS-/WFS-Import	5
4.	Object information	6
4.1.	Detailed information of objects.....	6
4.2.	GPS-Coordinates	6
5.	Tools	6
5.1.	Measure	6
5.2.	Redlining (Drawing of features)	7
	A) Adding a point, line or polygon	7
	B) Adding text labels.....	7
5.3.	Save and share map links	7
5.4.	Raster-Export	8
5.5.	Print a map	8
6.	See more maps	9
7.	Login for additional map products.....	9

1. General information

The user interface has four sections: the map canvas (1) in the center; the menu with a search field and tools in the upper menu bar (2); in the lower right corner you find tools like zoom and background maps (3); in the lower bar you find the spatial information (4).



2. Map navigation

2.1. Search function

Just enter a term in the search field and the open-street-maps library will retrieve relevant places or other objects, which match the query. You may select the relevant result by clicking on it. The map canvas will move to the place and the result appears labeled.


2.2. Zoom and pan

For panning the map canvas hold the mouse and move it. On touch screen use your finger to pan the map.

For zooming use the scroll wheel of your mouse or two fingers on the touchscreen.


Cascaded zooming can be done by clicking on + and – icon.[1]

The house symbol moves the map back to the entry point.[2]

You can zoom directly to a defined part of the map. Hold shift  and draw a rectangle with your mouse.



2.3. Full screen

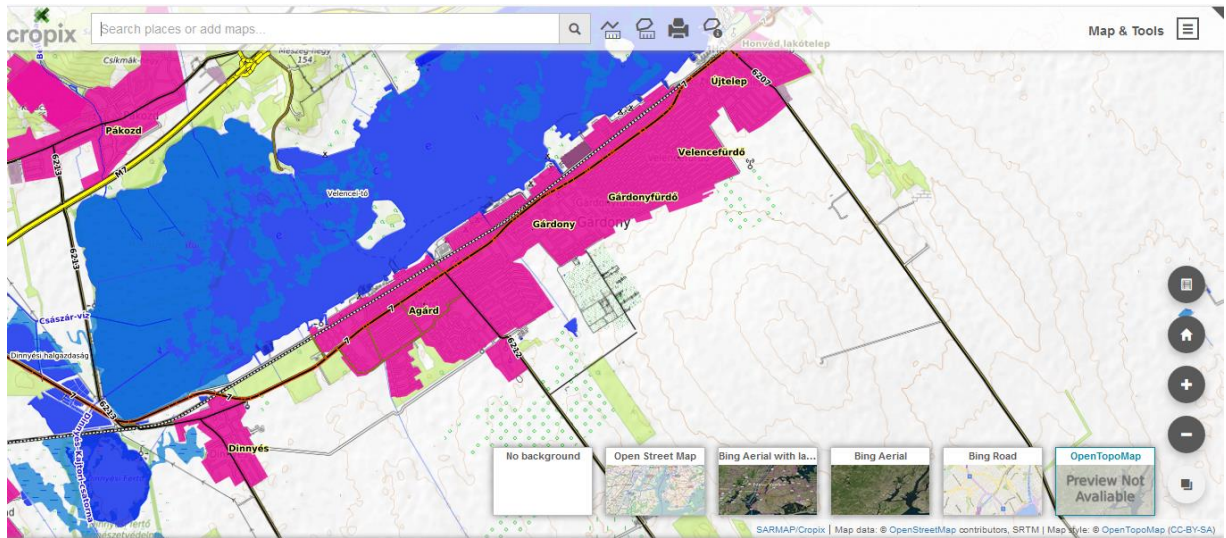
The WebGIS client has a full screen modus. There is a small black triangle in the upper right corner. Press -button or click on the inverse triangle again to leave the full screen.

3. Background maps, themes and layers

3.1. Change of the background map

There are 6 options as background map:

- ☐ «no background» (white surface)
- ☐ «Open-street-map» (latest colored open-street-map)
- ☐ «Labeled Bing aerial» (latest Bing aerial with streets and labels)
- ☐ «Bing aerial» (latest Bing aerial)
- ☐ «Bing road» (latest colored Bing roadmap)
- ☐ «Open Topo» (latest colored topographic map)

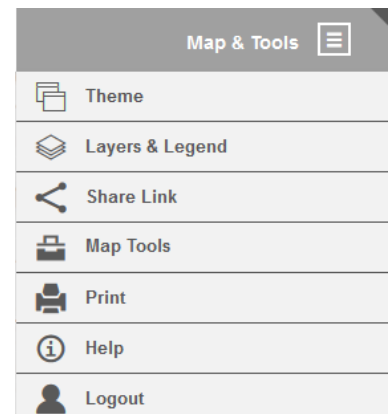
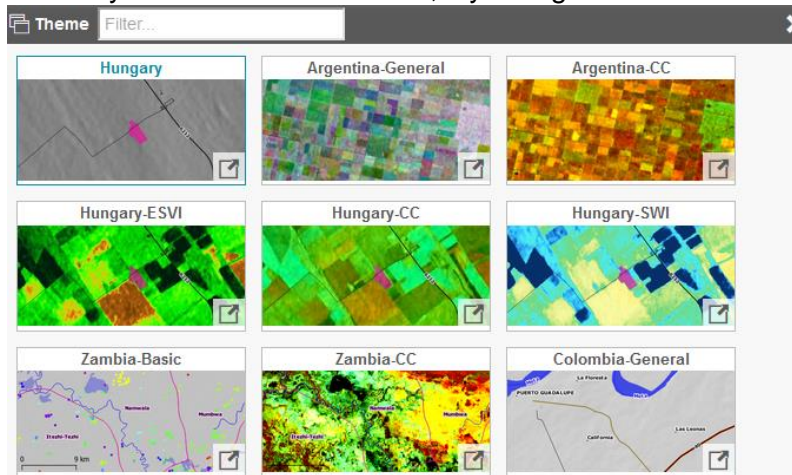


3.2. Themes

In the upper right corner you find the menu Map&Tools. There you find a sub-menu with the two upper topics “Themes” and “Layers & Legend”.

Themes contain various thematic layers (map products), which are regionally clustered. Some of those themes are free for public viewing. Others will be visible after a login.

You may create an user account, if you register at



<http://cropix.ch/register/>

The registration is for **free** and allows you to see additional map products.


3.3. Switch-on and -off map layers

In the sub-menu Layers & Legends you see the layer list of the current theme.


Layers become visible when you activate the check-box.


The visibility of the layers is top-down, which means, that the upper layer overlays the lower layer.

Satellite data from different orbits may overlay as well.

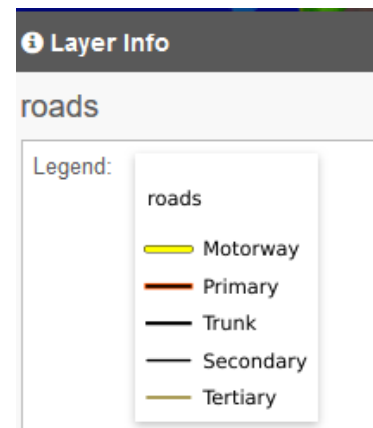
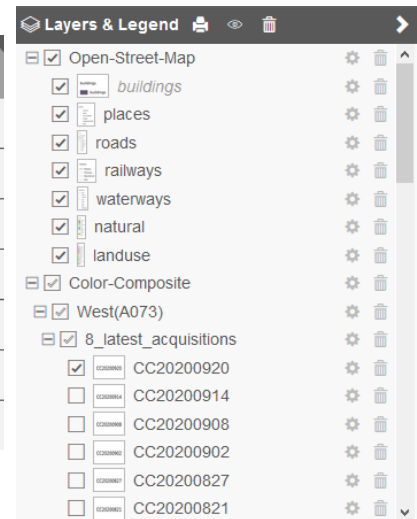
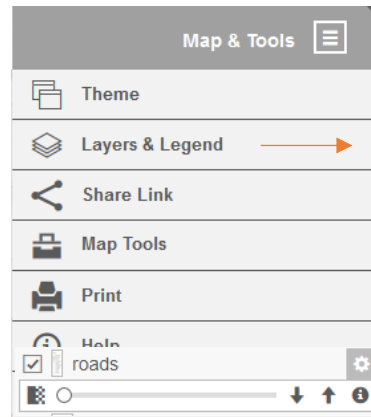
The cock-wheel  allows to set the opacity of the layer.

You can as well shift the layer up or down, which influences the visibility.

The layer Info  retrieves the legend definition of the layer.

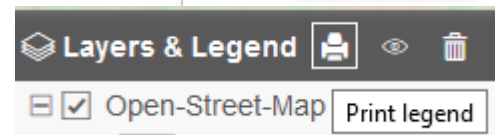
The waste bin removes the layer from the legend list. 

If you start the WebGIS application again, the layer is listed again.



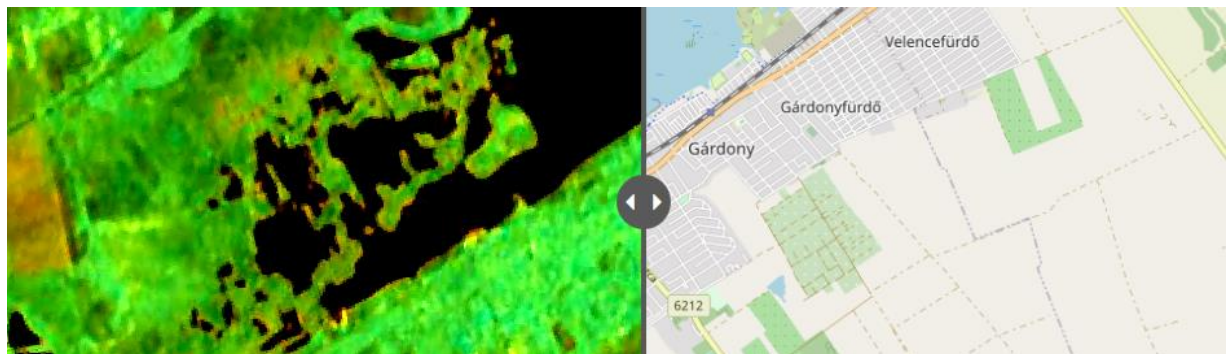
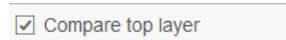
3.4. Print the legend

You can directly print the entire legend definition of all available layers. The button generates a html file, with a list of all legends. The list can be printed directly out of the browser.



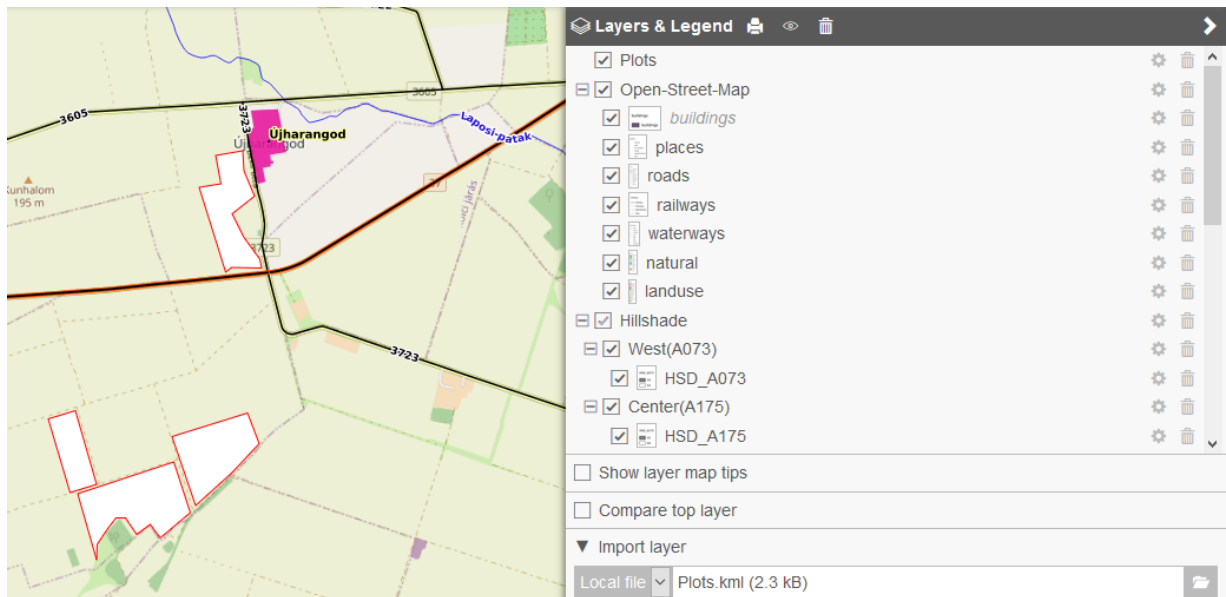
3.5. Compare the upper map layer, with a lower layer

The upper most map layer can be compared with any lower layer. The map divider can be moved dynamically from left to right.



3.6. Import external map layers

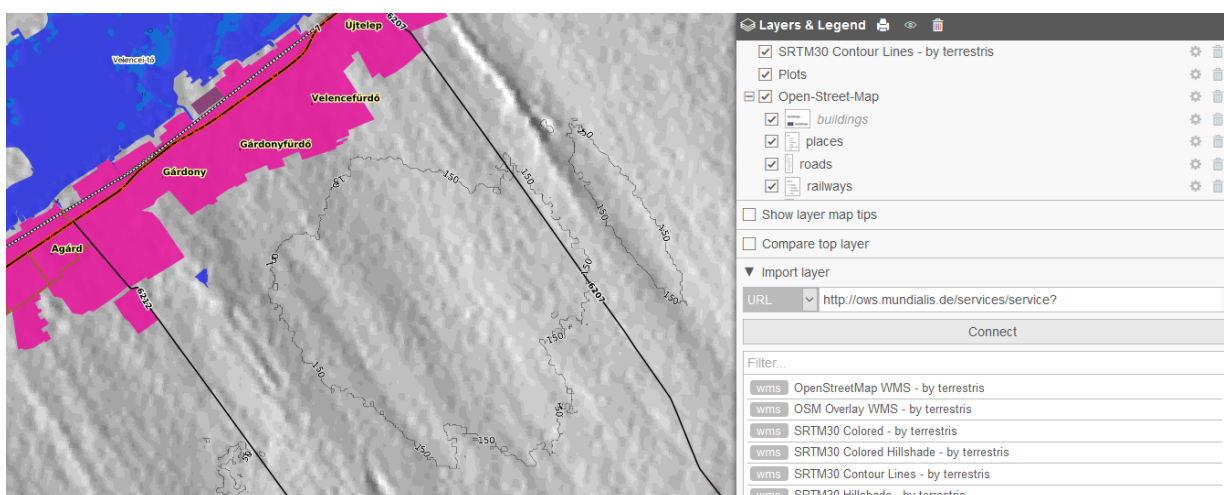
You can load external dataset with «Import layer» and add to the map. You may load as well layers from web-services like (WMS, WFS) as well as KML-files.



In this example the layer plots.kml was imported and appears as upper most layer in the layers list. The 4 geometries are drawn in the map.

WMS-/WFS-Import

You can import as well a WMS-/WFS Layer. Use «Import layer» and choose the option «URL». Now insert the address of the web-service. Click «Connect» and all layers of the web-service are listed. You can select one of the layers and add it to the map. In this example we selected the contour-lines, which are drawn in the map.



4. Object information

4.1. Detailed information of objects

You can query attributes of single objects by simple clicking on the map. In case various layers are active you retrieve the information of all of them.

The information appears in the «Feature Info» windows in the map canvas. The information can be «Exported» in a csv file.

Feature Info	
buildings: Kinai Áruház	
name	Kinai Áruház
building	retail
buildings: NULL	
building	yes
landuse: NULL	
osm_id	3120548
landuse	residential
Export	

```
1 buildings
2   "osm_id"    "NULL"
3   "name"     "Kinai Áruház"
4   "building"  "retail"
5   "osm_id"    "NULL"
6   "name"     "NULL"
7   "building"  "yes"
8
9 landuse
10  "osm_id"    "3120548"
11  "name"     "NULL"
12  "landuse"   "residential"
```

4.2. GPS-Coordinates

With right click of the mouse you get the coordinates from any point on the map.

- Coordinates (WGS84/Pseudo Mercator; Lat/Lon)
- Coordinates (WGS84; Lat/Lon)

You can as well copy «CTRL+C» the content of the text box and paste it in another document.

Position	
WGS 84 / Pseudo Mercator: 2075767, 5976760	
WGS 84:	18.6469, 47.2121

WGS 84 / Pseudo Mercator: 2075767, 5976760

WGS 84: 18.6469, 47.2121

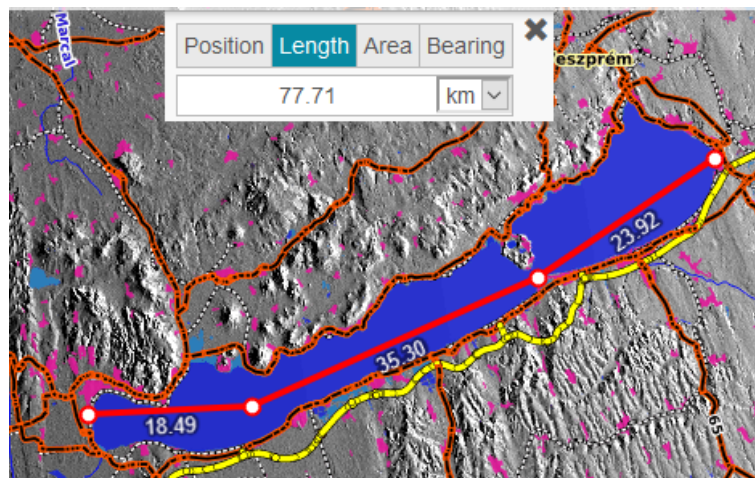
5. Tools

5.1. Measure

In the «Map Tools» you can activate the measure tool.

You can measure distances and areas. Simply click on the map to start your measurement. Finish with double-click.

You can select different units. The values of the single sections are written in the map. The total length is written in the text field of the tool.



5.2. Redlining (Drawing of features)

A) Adding a point, line or polygon

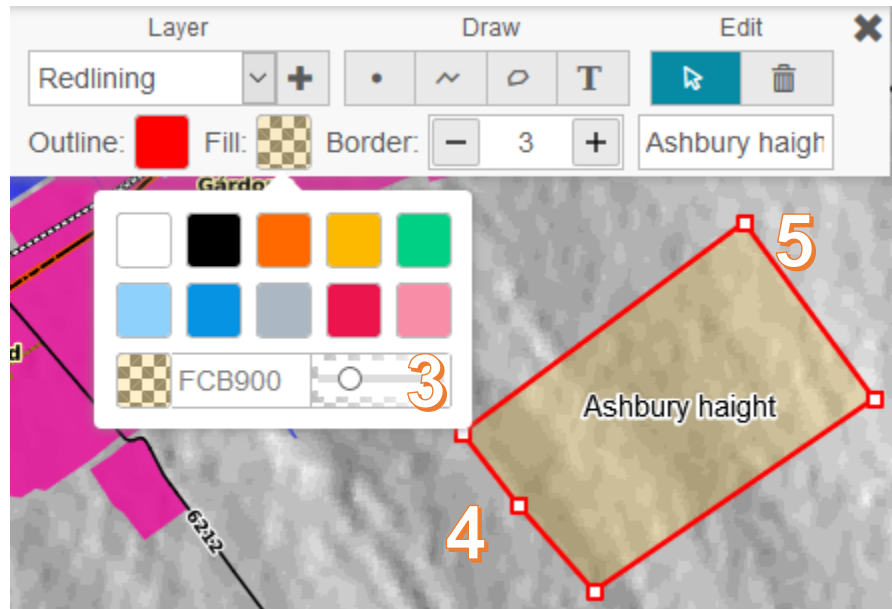
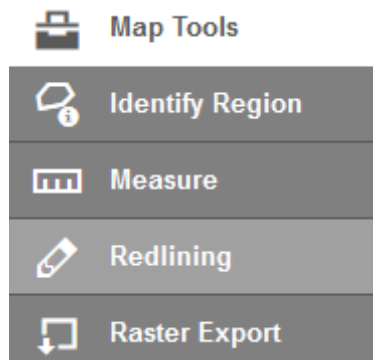
You have to activate in the menu «Map tools» the tool for redlining. Later you select the type of geometry you want to draw. You can draw the feature on the map with single mouse-clicks. You finish your drawing with a double mouse-click.

You can define the color and opacity for each object (3). Lines and Polygons can be corrected by setting new points on the line and shift them to the desired place (4).

All features can be labeled (5). You can define the thickness of the border line.

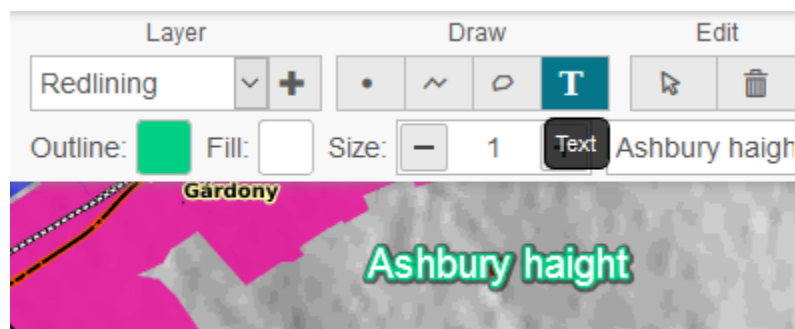
When you finish drawing the object will appear as topmost layer in the layers list.

With the waste bin you can delete a layer again.



B) Adding text labels

The same tool has the option «Text». With one click on the desired position you can add a text label to the map. For those objects you can define size and color. You can delete them as well with the dust bin.



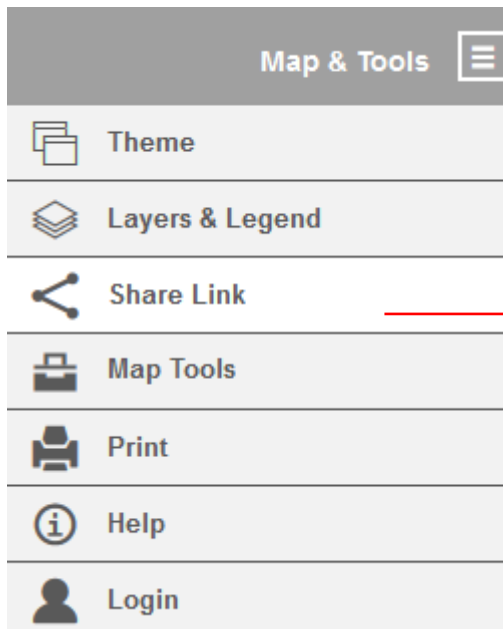
Info 1: All objects are saved in the temporary Layer «Redlining».

The layer can be switched-on and /-off, but not exported.

Info 2: Drawn objects will be included into map links and pdf maps.

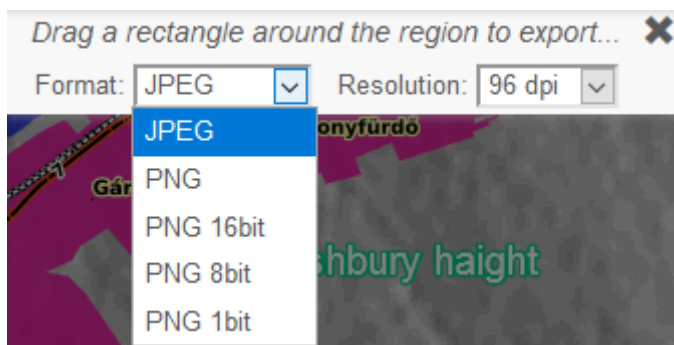
5.3. Save and share map links

With the menu «share link» you can copy, save and share the actual map as link. The link inherits the configuration of the layers including transparency and layer order. External layers (WMS, WFS or kml) and drawn objects are as well forwarded with the link.



5.4. *Raster-Export*

By drawing a rectangle you can export from the actual map in your canvas as PNG or JPEG. In menu «Map Tools» you activate the Raster-Export-Tool and select the preferred file format.



Draw with your mouse a rectangle over the area you want to export as raster file. The size of the image in pixel units will be shown in a text box.

The selected area is then shown in a separate browser window and can be saved on your hard-disk.

5.5. *Print a map*

You can generate pdf files or print outs from the current view. There are two print layouts available: A4 landscape/portrait.

In the menu Map&Tools you find the sub-menu «Print». The print extent is highlighted in the map. A dialogue appears with the following options to select.

- Layout to select the orientation of the output.
- Scale to select the scale of the output.
- Rotation allows to rotate the map in degrees
- Optionally you can add a geographic grid. In the map some gridlines appear with coordinates.

Optionally the user can insert a short text in a text-box, which appears later on top of the exported map.

6. See more maps

Some themes are set on public. For the other themes you first have to register to get a username and a password. The registration is for free. The registration will be done on an external sheet of the website. <http://cropix.ch/register/>

We ask you to leave some information like name, email, profession, actual employer, position, professional interest. Some of the information is mandatory, others not.

7. Login for additional map products

After registration you can login using your credentials. You will then see additional themes in the themes window.

For questions or comments, contact: info@cropix.ch